

Franklyn James



Medland House, Branch Road, E14 7JT

£2,600 Per Calendar Month



Medland House, Branch Road, E14 7JT

£2,600 Per Calendar Month

A spacious and well presented two double bedroom, two bathroom apartment located in the highly sought after Medland Court. This bright and modern property offers generous living space throughout, featuring a large open plan living and dining area with direct access to a sizeable private balcony boasting stunning views over Limehouse Marina and the Canary Wharf skyline.

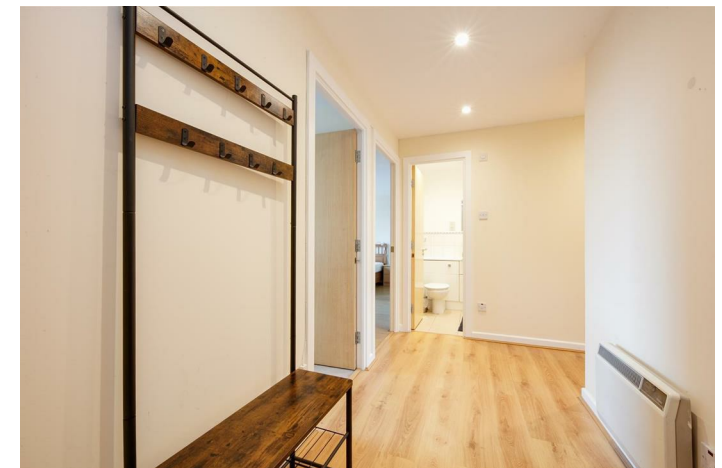
The separate fully fitted kitchen comes complete with integrated appliances, while the wide hallway leads to a large utility room. The accommodation comprises a spacious double bedroom with use of a stylish three-piece shower room, as well as a generously sized master bedroom and a sleek en suite bathroom. The apartment benefits from wood flooring throughout and ample built in storage.

Additional features include a secure underground parking space, 24-hour concierge service, and access to beautifully maintained communal gardens with tranquil waterfall features.

Medland Court is ideally positioned just a short walk from Limehouse DLR station, providing fast and direct links into the City (Bank Station) and Canary Wharf. Residents also enjoy proximity to the historic and charming Narrow Street, home to a range of popular pubs and eateries including Gordon Ramsay's "Bread Street" and the iconic riverside pub "The Grapes," part-owned by Sir Ian McKellen.

Description

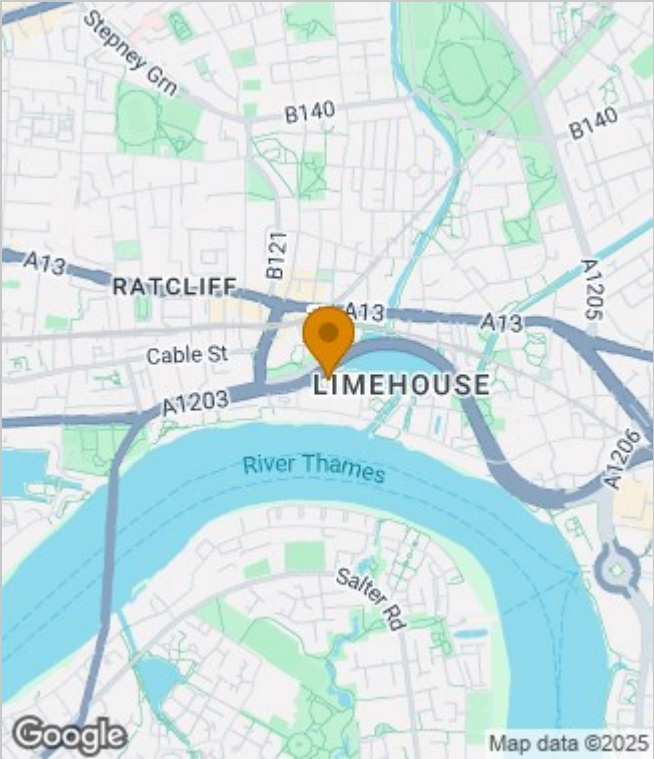
- Furnished
- Spacious two bedroom
- Two bathroom
- Fully intergrated appliances
- Large private balcony
- Secure underground parking
- 24 hour concierge and security
- Private communal gardens
- Walking distance from Limehouse DLR
- Easy access into Canary Wharf and the City



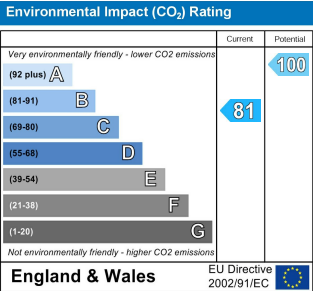
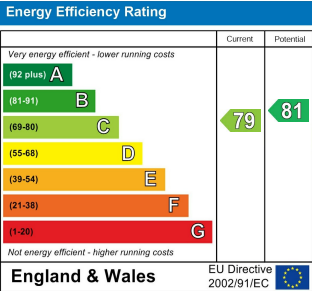
Furnished
Council Tax Band: F
Available: 4th August 2025



Area Map



Energy Performance Graph



These particulars, whilst believed to be accurate are set out as a general outline only for guidance and do not constitute any part of an offer or contract. Intending purchasers should not rely on them as statements of representation of fact, but must satisfy themselves by inspection or otherwise as to their accuracy. No person in this firms employment has the authority to make or give any representation or warranty in respect of the property.

Franklyn
James

29 Narrow Street, London, E14 8DP
Tel: 02077911777 Email: lettings@franklynjames.co.uk <https://www.franklynjames.co.uk>